



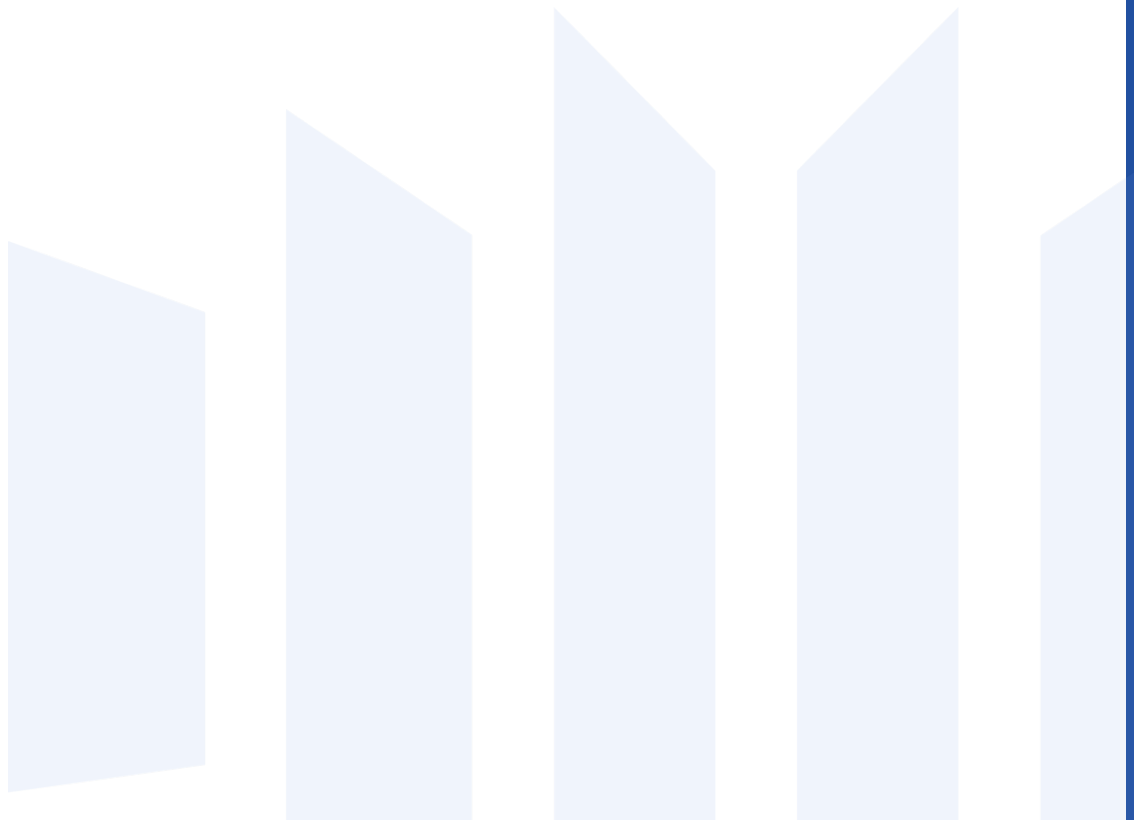
Launching Your Research Program – Non-Traditional Research Pathway

Clinical Research

Cindy Kin, MD, MS
Assistant Professor
Stanford University

Disclosures

- None

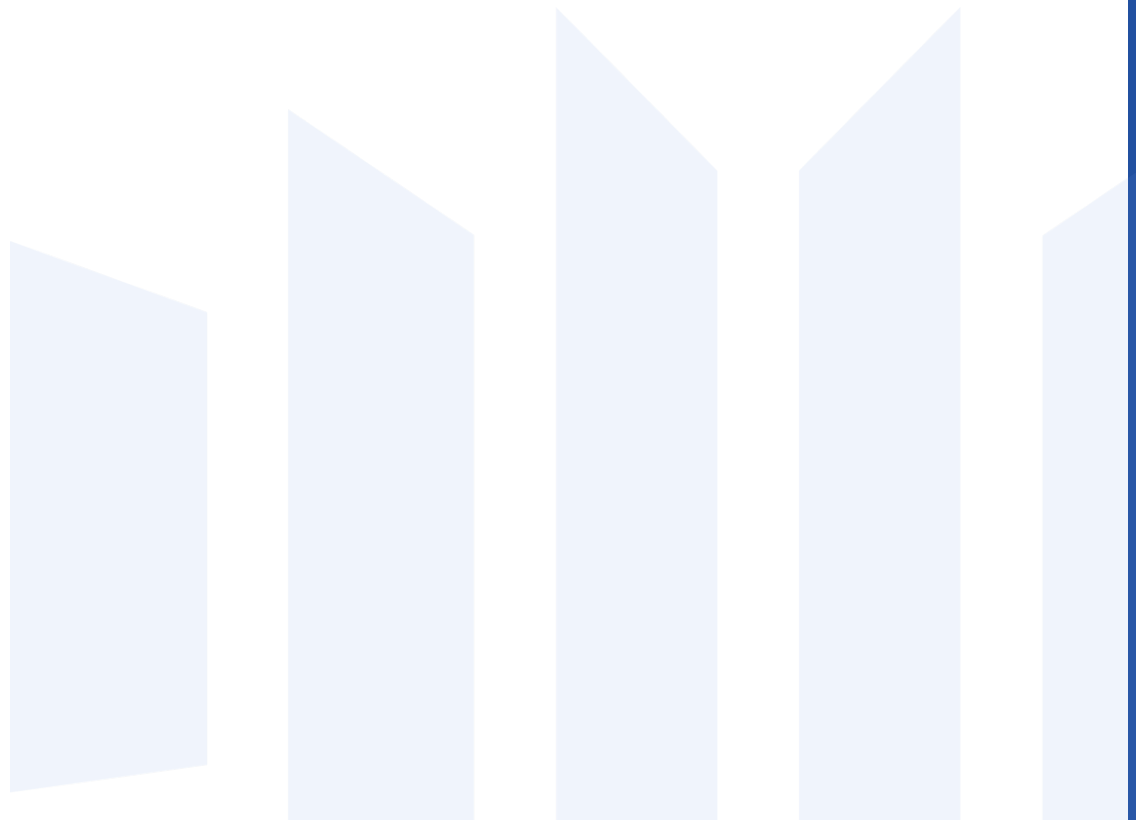


Critical Components

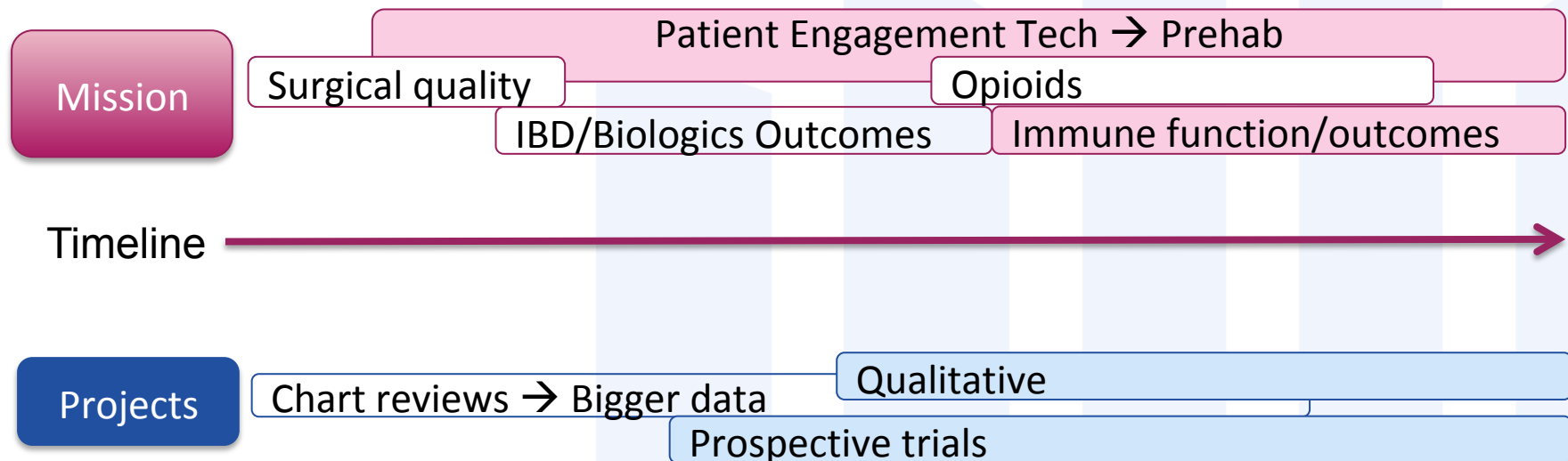
MISSION

SKILLS

PEOPLE



Critical Component 1: MISSION



Critical Component 1: MISSION

Niche
vs.
Diversification



Critical Component 1: MISSION

Niche
vs.
Diversification



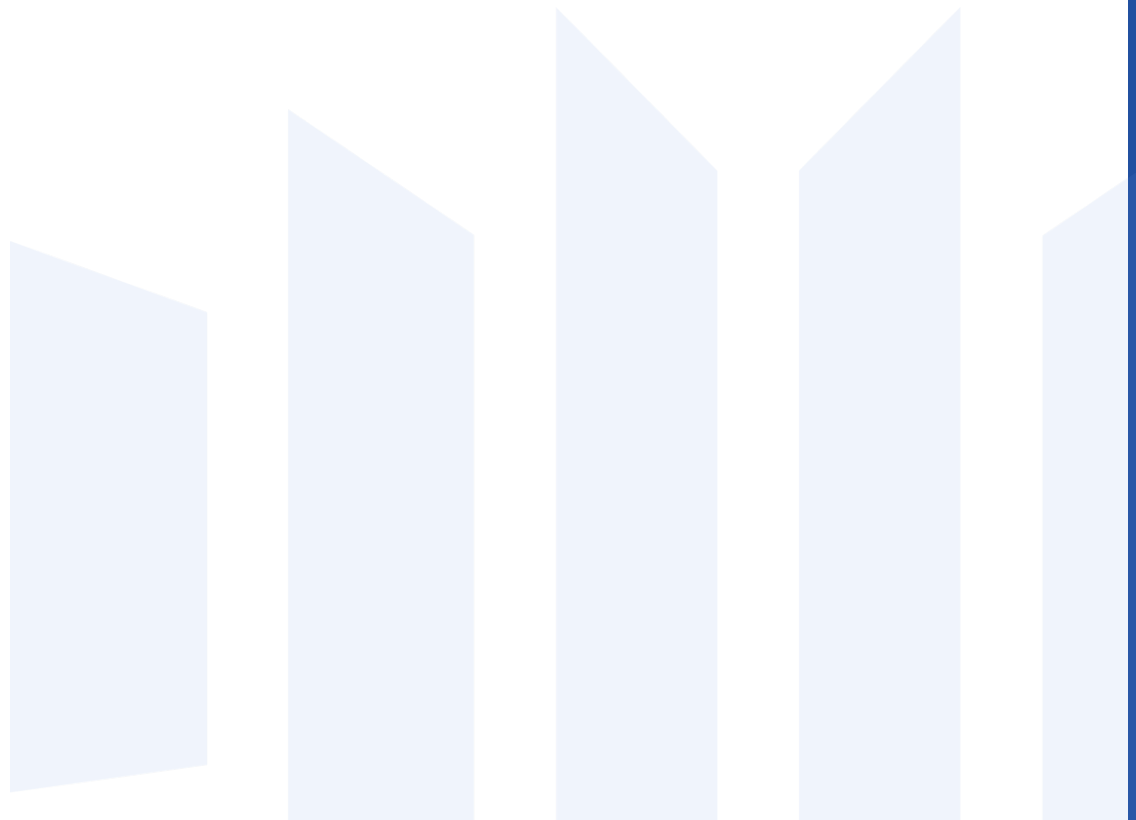
CommitStrip.com

Critical Components

MISSION

SKILLS

PEOPLE



Critical Component 2: SKILLS

SKILLS

Education

Masters in HSR

Biodesign

MMR

Clinical

So much butt pain

Floodgates open

↑Efficiency

↑Sanity

Timeline



Critical Component 2: SKILLS

Education

Masters in HSR

Biodesign

MMR

Timeline



- Statistics
- Qualitative
- Know your datasets



Critical Component 2: SKILLS

Clinical

So much butt pain

Floodgates open

↑Efficiency

↑Sanity

Timeline

Robust clinical practice:

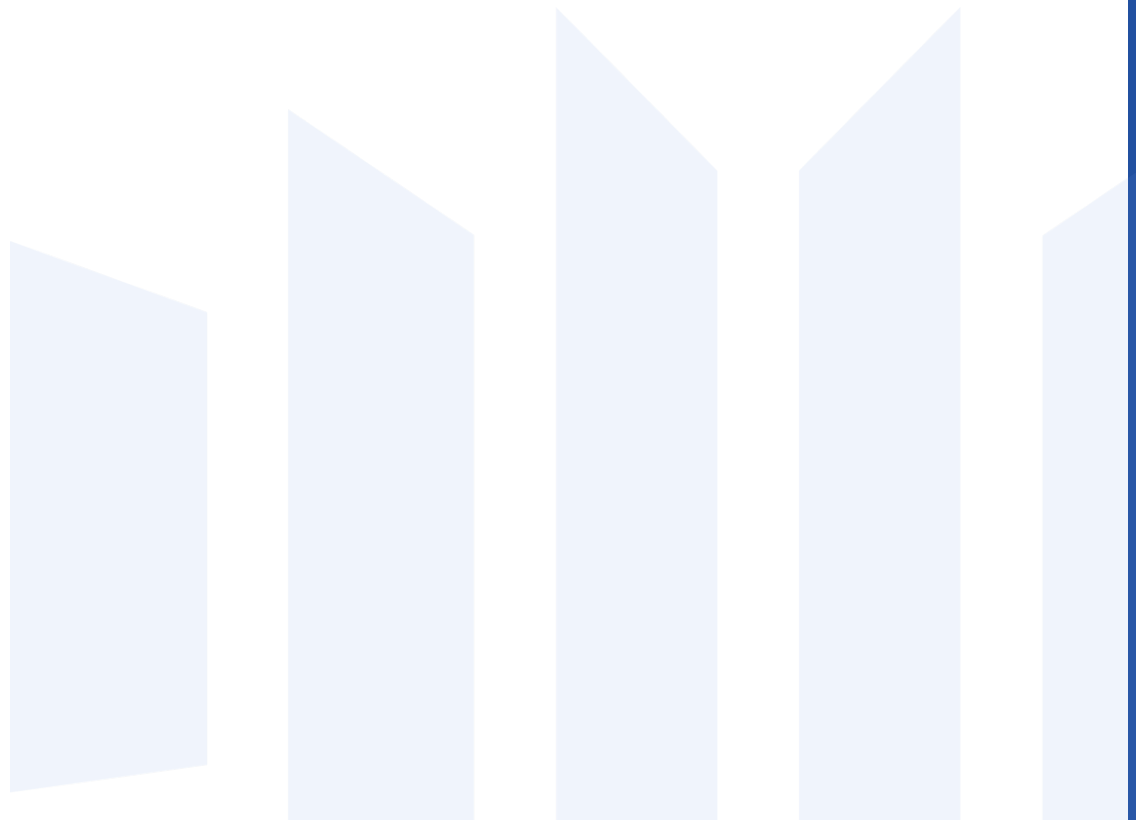
- Inspiration for new research
- Access to collaborators
- Political capital

Critical Components

MISSION

SKILLS

PEOPLE



Critical Component 3: PEOPLE

PEOPLE

Personnel

Collab

Timeline

<1 college grad

Resident

College grad

Data Analyst

Med students

Undergrads

RC

Peds GI/HSR

Anesth/Immuno Lab

OMFS/Ortho/Psych

HPB

Critical Component 3: PEOPLE



Personnel

Collab

<1 college grad

Resident

College grad

Data Analyst

Med students

Undergrads

RC

Peds GI/HSR

Anesth/Immuno Lab

OMFS/Ortho/Psych

HPB

Build your village

Mentors
Advisors
Collaborators
Trainees
Allied health
Research staff
Data analysts/stats

Finding Other Villages

- Expand your circle:
 - Beyond surgery
 - Beyond medicine
 - Beyond home institution
- Collaborators and their trainees



Critical Components

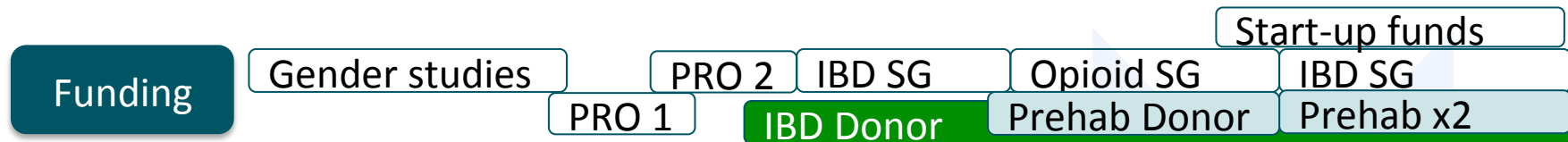
MISSION

SKILLS

PEOPLE



Funding the village



- Intramural grants
- Grateful patients
- Start-up funds
- Industry



Funding the village



- Grants notifications
- Lots of shots on goal



\$tretching the \$eed Grant \$

- Leverage technology to replace manpower
- Allow for flexibility, less FTE

SeamlessMD



PATTERN
HEALTH

\$tretching the \$eed Grant \$

- Industry / Start-ups
 - Equipment grants
 - Negotiate

**Orgain**
CLEAN NUTRITION



PATTERN
HEALTH


GOLDEN GATE
organics

Seamless**MD**


NordicTrack

Only hire what you need

Prehab
Trials

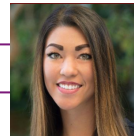
Study #1

Study #2

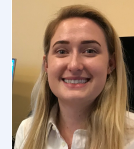
Study #3

Prehab
Personnel

20% RC



Recent College Grad



RC



Undergrads

Physio/Webmaster



\$tretching the \$eed Grant \$

- Temps vs. full-time employees

Shared Resources

- Shared FTEs
- Stats consultation



Creative Frugality



Communications
manager

Yoga
teacher,
collab's
daughter

Student,
rower



PT,
daycare mom



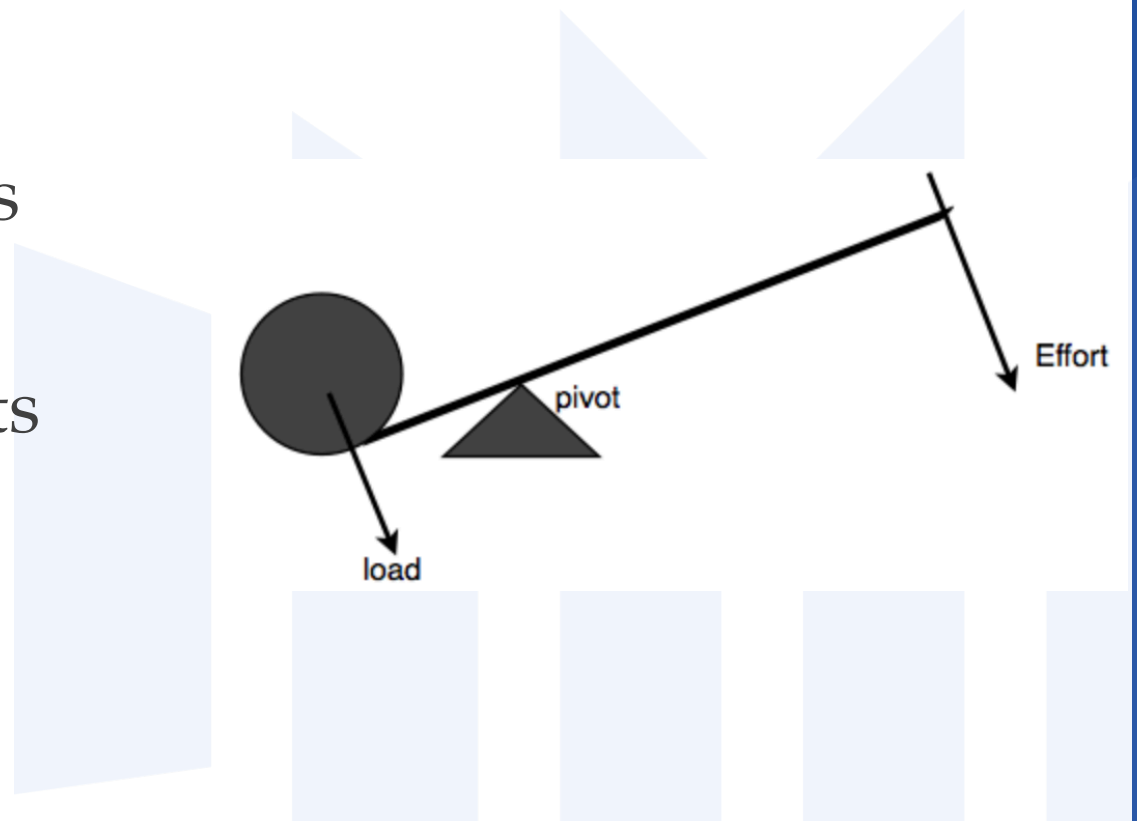
Research
Resident

Gap year

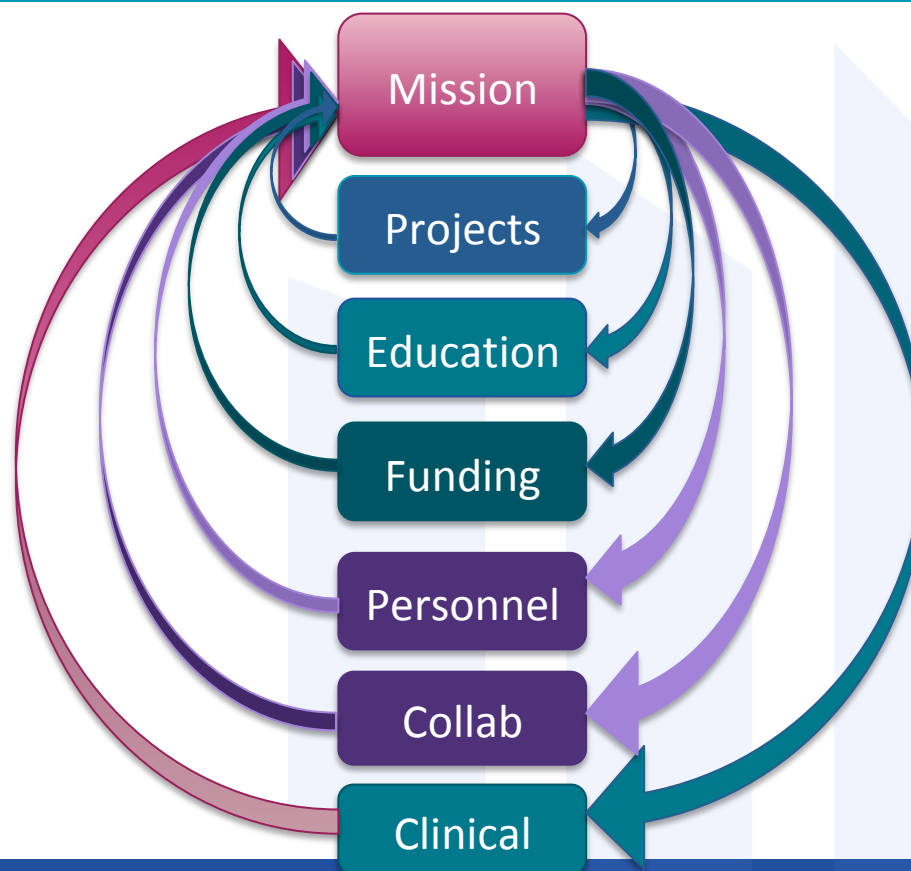


Force Multipliers

- Medical students
- Residents
- Admin Assistants



MISSION, SKILLS, PEOPLE



Key Points

Mission

Evolve.
Side hustle might go big.

Projects

Education

Know your stats, know your datasets.

Funding

Take lots of shots on goal. Use existing resources.

Personnel

Don't overhire.

Collab

Be open and engage: running group, daycare, anesthesia, GI, med onc

Clinical

Operate. Integrate practice with research.

Thank you

cindykin@stanford.edu